



### PWM HYDRAULIC BANK KIT

The HYDRAULIC BANK KIT allows to adapt the systems of manual operation in order to be controlled with an Itowa radio remote control.

It consists of an electro-hydraulic proportional PWM system with 4, 6 or 8 sections which controls the hand levers of the application. The Itowa radio control receiver takes care of commanding the PWM signals needed to control each maneuver.

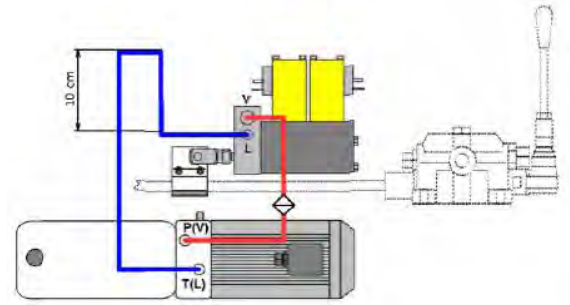


# HYDRAULIC BANK

PWM Adaptation Kit for Remote Control

## TECHNICAL FEATURES Hydraulic Bank

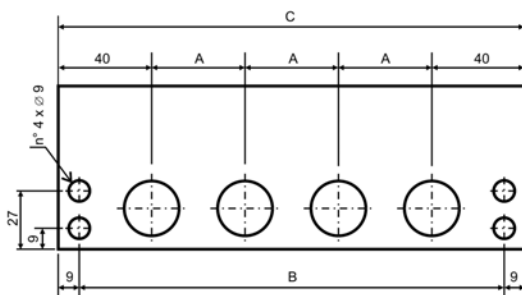
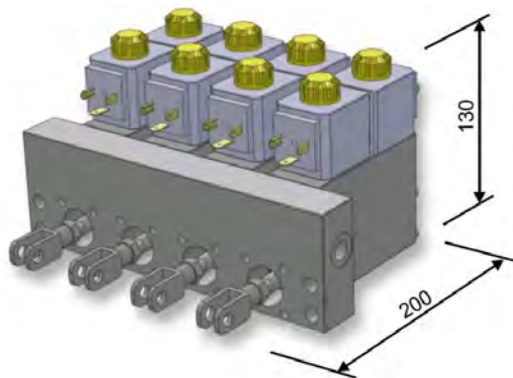
- PWMSG modules 4 or 6 sections
- Supply voltage Versions at 12V and 24V
- Intensity 600 / 1400mA (12V)  
300 / 700mA (24V)
- Control circuit Closed loop
- Working temperature -25°C to +60°C
- Type of fluid Mineral oil 10-200cSt
- Maximum working pressure 30 bar
- Maximum thrust 1300 N at 30 bar
- Mechanical stroke +/- 13 mm
- Weight 1,6 Kg



Recommended mounting

## MEASURES Hydraulic Bank

TYPE	A (mm)	B (mm)	C (mm)
4 FUNCTIONS	40	182	200
	46	200	218
	50	212	230
6 FUNCTIONS	40	262	280
	46	292	310
	50	312	300



Kit associated with the Radio Control SetVal and PWM receiver



PWM



07/2021  
Design and specifications subject to change without prior notice.



Faraday, 159 - 08224 TERRASSA (Barcelona) SPAIN  
Tel. +34 93 733 98 50 - Fax +34 93 789 13 51  
<http://www.itowa.com> - e-mail: [info@itowa.com](mailto:info@itowa.com)